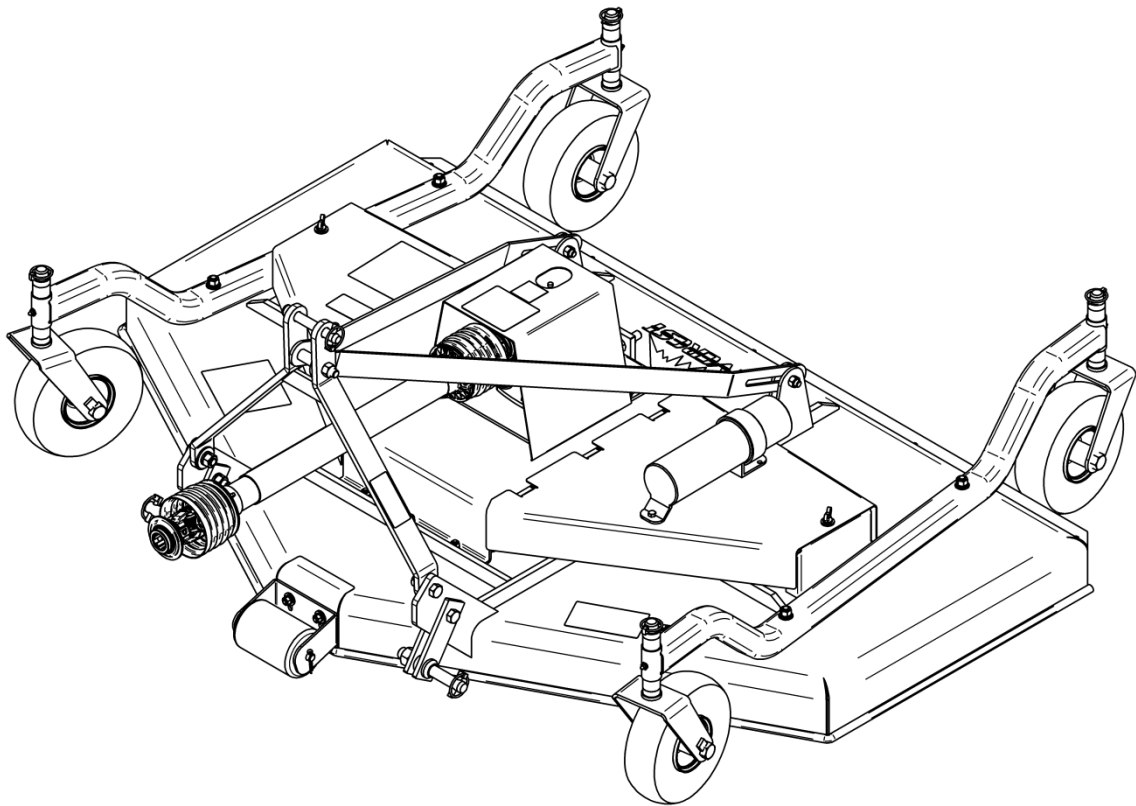




# OPERATOR AND PARTS MANUAL

---

FINISHING MOWER



## Contents

<b>INTRODUCTION .....</b>	<b>3</b>
<b>SAFETY.....</b>	<b>4</b>
SAFETY DECALS.....	5
SAFETY DECAL CONTINUED .....	6
<b>GENERAL SAFETY .....</b>	<b>7</b>
<b>GENERAL METAL FABRICATION LIMITED WARRANTY .....</b>	<b>8</b>
GENERAL METAL FABRICATION LIMITED WARRANTY.....	9
<b>ASSEMBLY INSTRUCTIONS .....</b>	<b>10</b>
<b>PREPARATION FOR USE .....</b>	<b>11</b>
PREPARATION FOR USE – CONTINUED.....	12
<b>OPERATING INSTRUCTIONS .....</b>	<b>13</b>
<b>MAINTENANCE .....</b>	<b>14</b>
MAINTENANCE – CONTINUED.....	15
<b>PARTS LIST ILLUSTRATION .....</b>	<b>16</b>
<b>PARTS LIST .....</b>	<b>17</b>
PARTS LIST CONTINUED.....	18
PARTS LIST CONTINUED.....	19
<b>5' &amp; 6' PTO PARTS.....</b>	<b>20</b>
<b>5' &amp; 6' PTO PARTS OPTIONAL HEAVY .....</b>	<b>21</b>
<b>7' PTO PARTS .....</b>	<b>22</b>
<b>WHOLEGOODS PRODUCT KIT NUMBERS.....</b>	<b>23</b>

Printed in Canada

05/2019

## INTRODUCTION

General Metal Fabrication has been producing high quality farm equipment since 1990. Our line of Everest finishing mowers are manufactured with top quality material and workmanship. We feel confident that this equipment will meet your expectations in reliability and performance when used as designed. This manual is to assist you in the safe assembly, maintenance, and operation of the Everest finishing mower. It also has a parts list to help you when replacement parts are required. The mower deck is built with 7ga material; each mower features three heavy duty spindles and high speed blades to be durable and long lasting. Everest finishing mowers are available in 5', 6' and 7' sizes.

The care you give your Everest implement will greatly determine your satisfaction with its performance and its service life. We urge a careful study of this manual to provide you with a thorough understanding of your new implement before operating, as well as suggestions for operation and maintenance and storage.

If this manual should become lost or destroyed we will be glad to provide you with a new copy.

As an authorized Everest dealer, we stock genuine Everest parts which are manufactured with the same precision and skill as our original equipment.

Should you require additional information or assistance please contact us.

THE ILLUSTRATIONS AND INFORMATION CONTAINED WITHIN THIS MANUAL ARE CURRENT AT THE TIME OF PUBLICATION. EVEREST MAINTAINS AN ONGOING PROGRAM OF PRODUCT IMPROVEMENT, THEREFORE WE RESERVE THE RIGHT TO MAKE IMPROVMENTS IN DESIGN OR CHANGES IN SPECIFICATIONS WITHOUT INCURRING ANY OBLIGATION TO INSTALL THEM ON UNITS PREVIOUSLY MANUFACTURED.

MODEL: \_\_\_\_\_

SERIAL: \_\_\_\_\_

DATE OF PURCHASE: \_\_\_\_\_

DEALER NAME: \_\_\_\_\_


## SAFETY

Remember YOU are the key to safety. Do not risk damage to the mower, personal injury or death. It is essential that you read the instructions and safety regulations before you operate this finishing mower.

**Note:** our products are designed to be safe and dependable. It is the owner's responsibility that anyone operating this equipment reads and understands this manual and the operation of the equipment before operating.

### SAFETY DECALS


- Keep decals clean and readable.
- Replace safety decals if damaged and or not readable.
- New decals are available from your dealer or manufacturer.

The "Safety Alert Symbol" () in conjunction with a "Signal Word" (CAUTION, WARNING or DANGER) is used if there is a possible personal death or injury hazard

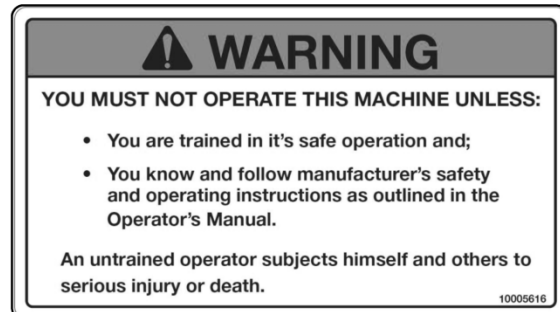
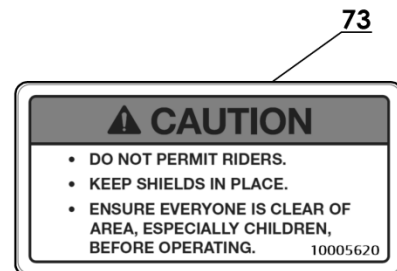
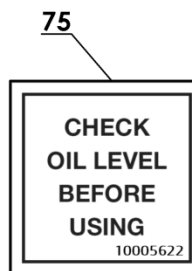
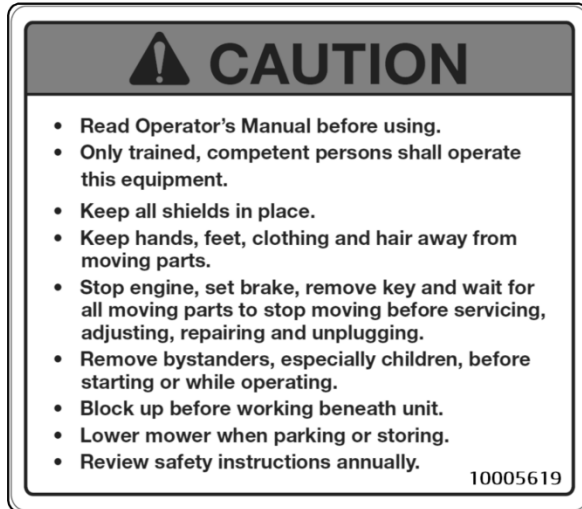
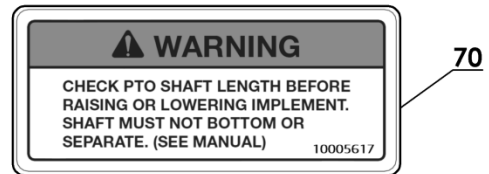
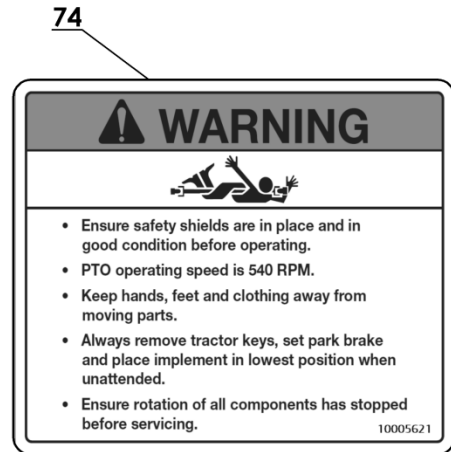
<b>NOTICE</b>
To address practices not related to personal injury. The safety alert symbol shall not be used with this signal word.

 <b>CAUTION</b>
Indicates a potentially hazardous situation which, if not avoided, could result in minor or moderate injury.

 <b>WARNING</b>
Indicates a potentially hazardous situation which, if not avoided, could result in death or serious injury.

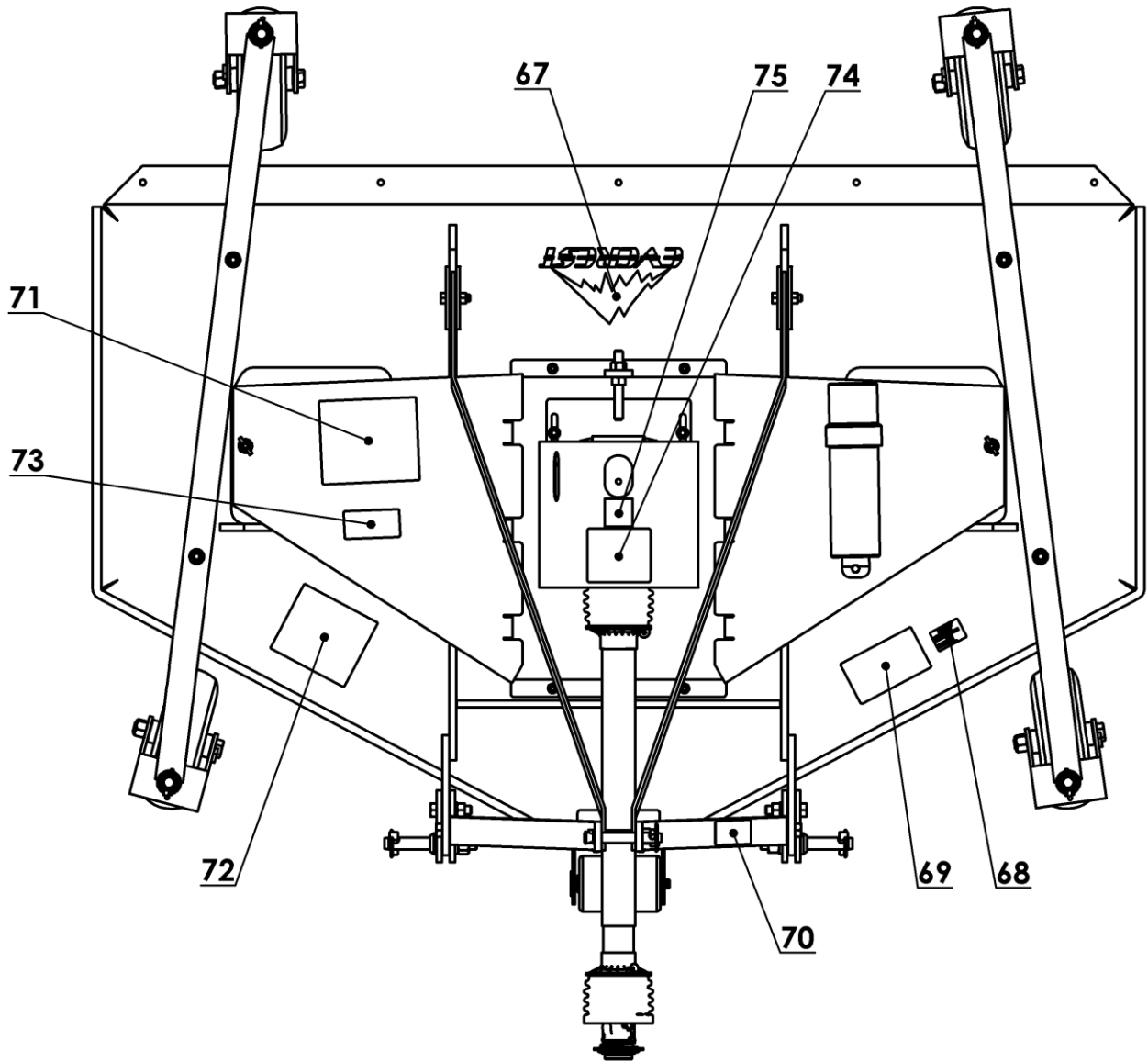
 <b>DANGER</b>
Indicates an immediate hazardous situation which, if not avoided, will result in death or serious injury. This signal word is to be limited to the most extreme situations and if guards cannot be added for functional purposes.

## SAFETY DECALS



## SAFTEY DECAL continued

To promote safe operation, safety decals are provided on all products manufactured. Because damage can occur to decals in everyday use or in reconditioning, replacement decals are available. To install decals make sure the surface is clear and free from oil. Decide on the exact location before removing backing paper.



## ***GENERAL SAFETY***

In addition to the design and configuration of equipment, hazard control and accident prevention are dependent upon the awareness, concern, prudence and proper training of personnel in the operation, transportation, maintenance and storage of equipment. Lack of attention to safety can result in accident, reduction of efficiency, personal injury or loss of life. Watch for safety hazards and correct them immediately. Use the following safety precautions as a general guide to safe operations when operating this machine. Additional safety precautions are used throughout this manual for specific operating and maintenance procedures. Read this manual and review the safety precautions often.

- Read the instructions carefully. Be familiar with the controls and all the cautions related to this equipment.
- Never allow children, or people not familiar with these instructions to operate this equipment.
- Never carry passengers.
- The operator is responsible for accidents or hazards occurring to people or property. The operator should cease mowing whenever anyone comes within the operating area.
- Clear the work area of objects that might be picked up and thrown.
- Do not operate without all guards and shields in place and in good condition.
- Before starting or operating the machine, make a walk around inspection and check for obvious defects such as loose bolts and damaged components. Correct any problems before starting.
- Lower implement to the ground, stop tractor engine, apply parking brake, and allow blades to completely stop before leaving the tractor.
- Keep hands and feet clear of rotating blades and components.
- Wear personal protective equipment such as, but not limited to, protection for the eyes, ears, feet, hands and head when operating or repairing the equipment. Do not wear loose clothing or jewelry that may catch on equipment moving parts.
- Never stand between mower and tractor while tractor is being backed to the mower hitch.
- When performing maintenance or adjusting mower, first lower it to the ground or block it securely at a workable height.
- Use tractor flashing warning light, day or night, when transporting mower on road or highways unless prohibited by law.
- It is recommended that tractors be equipped with rollover protective systems (ROPS) and seat belts are used in all mowing operations.

## **General Metal Fabrication Limited Warranty**

### **This Document limits Your Warranty Rights**

#### **Base Limited Warranty**

General Metal Fabrication Ltd. provides this warranty only to the original retail purchaser of this product. General Metal Fabrication Ltd. warrants to such purchasers that all Everest manufactured parts and components used and serviced as provided for in the Operator's Manuals shall be free from defects in material and workmanship for a period following delivery to the original retail purchaser of 12 months (90 days for commercial applications). Parts and components manufactured by others are subject to their manufacturer's warranties, if any.

General Metal Fabrication Ltd. will fulfill this limited warranty by, at its' option, repairing or replacing any covered part that is defective or is the result of improper workmanship, provided the part or parts are returned to General Metal Fabrication Ltd. within thirty (30) days of the date that such defect or improper workmanship is, or should have been, discovered. General Metal Fabrication reserves the right to either inspect the product at the buyer's location or have it returned to the factory for inspection. Parts must be returned through the selling representative and the buyer must prepay transportation charges.

General Metal Fabrication Ltd. will not be responsible for repairs or replacements that are necessitated, in whole or part, by the use of parts not manufactured by or obtained from General Metal Fabrication Ltd. Under no circumstances are component parts warranted against normal wear and tear. There is no warranty on components that require replacement as part of normal maintenance. The purchaser is solely responsible to determine suitability of goods sold. This warranty is expressly in lieu of all other warranties expressed or implied. General Metal Fabrication will in no event be liable for any incidental or consequential damages whatsoever, nor for any sum in excess of the price received for the goods for which liability is claimed.

#### **Repair Parts Limited Warranty**

General Metal Fabrication Ltd. warrants Everest replacement parts purchased after the expiration of the General Metal Fabrication Ltd. limited Warranty, and used and serviced as provided for in the Operator's Manual, to be free from defects in material or workmanship for a period of thirty (30) days from the invoice date for the parts. General Metal Fabrication Ltd. will fulfill this limited warranty by, at its option, repairing or replacing any covered part that is defective or is the result of improper workmanship, provided that the part is returned to General Metal Fabrication Ltd. within thirty (30) days of the date that such defect or improper workmanship is, or should have been, discovered. Such parts must be shipped to General Metal Fabrication Ltd. at the purchaser's expense.

#### **What is Not Covered?**

Under no circumstances does this limited warranty cover any components or parts that have been subject to the following: negligence; alteration or modification not approved by General Metal Fabrication Ltd.; misuse; improper storage; lack of reasonable or proper maintenance, service, or repair; normal wear; damage from failure to following operating instructions; accident; and or repairs that have been made with parts other than those manufactured, supplied, and or authorized by General Metal Fabrication Ltd.



## **General Metal Fabrication Limited Warranty**

### **Authorized Dealer and Labour Costs**

Repairs eligible for labour under this limited warranty must be made by General Metal Fabrication Ltd. or an authorized Everest dealer. General Metal Fabrication Ltd. retains the exclusive discretion to determine whether it will pay labour cost for warranty repairs or replacement, and the amount of such costs that it will pay and the time in which the repairs will be made. If General Metal Fabrication Ltd. determines that it will pay labour cost for warranty work, it will do so by issuing a credit to the Dealer's or Distributor's account. General Metal Fabrication Ltd. will not approve or pay invoices sent for repairs that General Metal Fabrication Ltd. has not previously approved. Warranty service does not extend the original term of this limited warranty.

### **Warranty Labour**

Any labour subject to warranty must be authorized by General Metal Fabrication Ltd. The labour rate for replacing defective parts, where applicable, will be credited at 100% of the dealer's posted shop rate.

### **Warranty Requirements**

If the Dealer or Distributor decides to purchase replacement components before the warranty disposition of such components is determined, General Metal Fabrication Ltd. will bill the customer for such components and then credit the replacement invoice for those components later determined to be covered by this limited warranty. Any such replacement components that are determined not to be covered by this limited warranty will be subject to the terms of the invoice and shall be paid for by the purchaser.

### **Warranty Claims**

Warranty requests must be prepared on General Metal Fabrication Ltd. warranty Claim Forms with all requested information properly completed. Warranty Claims must be submitted within a thirty (30) day period from date of failure repair.

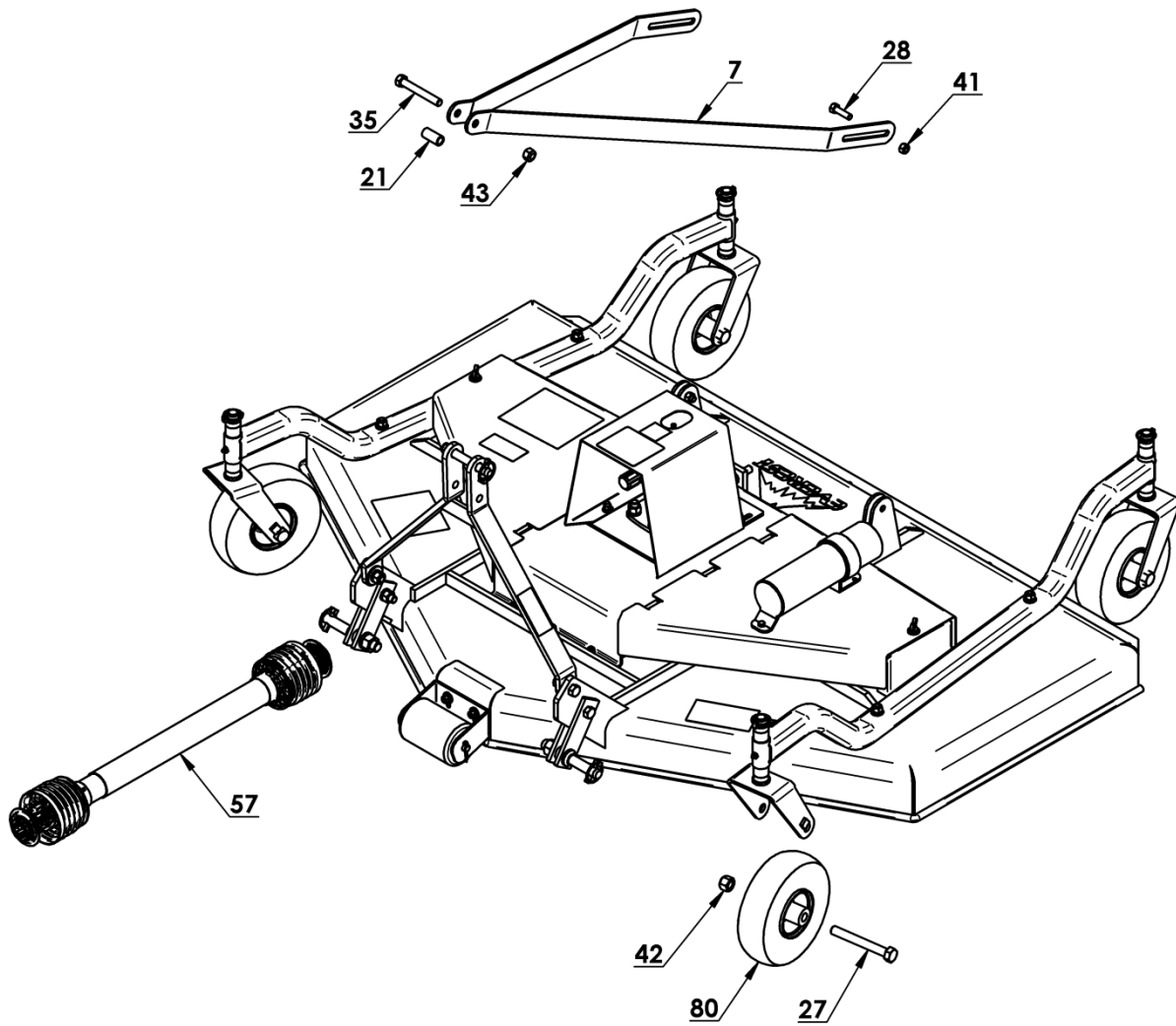
### **Exclusive Effect of Warranty and Limitation of Liability**

To the extent permitted by the law, General Metal Fabrication Ltd. disclaims any warranties, representations, or promises express or implied, as to the quality, performance, or freedom from defect of the components and parts covered by this warranty and not specifically provide for herein.

To the extent permitted by law, General Metal Fabrication Ltd. disclaims any implied warranties of merchantabilities and fitness for a particular purpose on its products covered herein, and disclaims any reliance by the purchaser on General Metal Fabrication Ltd. skill or judgment to selector furnish goods for any particular purpose. The purchaser's only and exclusive remedies in connection with the breach or performance of any warranty on product manufactured by General Metal Fabrication Ltd. are those set forth herein. In no event shall General Metal Fabrication Ltd. be liable for incidental or consequential damages (including by way of example only and not limitation, loss of crops, loss of profits or revenue, other commercial loss, inconvenience, or cost of replacement of rental equipment). In no event shall General Metal Fabrication Ltd. contract or warranty liability exceed the purchase price of the product.

**Note:** Finishing Mower blades carry no warranty

## ASSEMBLY INSTRUCTIONS



The mower is assembled except for two pivot bars (#7), and the wheels (#80). Using hardware that is already assembled to the mower (#35, 21, 43, 28, 41, 42 and 27) bolt pivot arms into place, making sure the pivot arms can move freely to ensure smooth operations.

The wheel and tire assemblies are shipped in a separate carton. Start by removing the  $\frac{3}{4}$ " bolt in the wheel yoke; assemble the wheel using bolt and lock nut. Grease wheels and wheel yokes before using for the first time.

## PREPARATION FOR USE

The Everest finishing mower is designed to be used with a standard category 1 three-point hitch.

### Connecting to tractor

Make sure the tractor and the mower are on level dry ground free from foreign objects.

- Move tractor to mower slowly making sure no person or pet is between tractor and mower.
- Adjust the three point arms to be parallel with the mower lift pins.
- Set the parking brake, remove ignition key before dismounting the tractor.
- Attach the three point arms to the lift pins and lock in place with lynch pins provided.
- With the tractor engine shut off, fasten the PTO shaft; both ends of the PTO have a standard 6-spline end with a spring loaded locking collar. To activate the spring loaded locking collar turn the collar clockwise, then slide onto the splined shaft. The yoke must lock into the groove of the splined shaft on the tractor and the gearbox. Always check to see that the yokes are securely attached before each use. Fasten the safety chains provided with the PTO shaft, allowing sufficient slack for the driveline during cornering and operations.
- **NOTE:** Due to the many variations in tractor hitches and PTO locations. Drivelines may need to be shortened to ensure proper length.
  - Raise and lower mower to determine shortest distance between tractor PTO and mower input shaft. Shut down tractor leaving mower in position of shortest distance. **SECURELY BLOCK MOWER IN POSITION.**
  - Pull driveline apart. Attach outer (Female) section to the tractor PTO shaft, making sure they are secure.
  - Hold driveline sections parallel to each other to determine if it is too long. Each section should end approximately 3 inches short of reaching universal joint shield on opposite section. If too long measure 3 inches back from universal joint shield and mark opposite section. Do this for both sections.
  - Raise and lower mower to determine longest distance between tractor PTO and mower input shaft. Shut down tractor and securely block mower in position.
  - Hold the drive line parallel to each other and check for a minimum of 6 inch overlap. If driveline has been marked for cutting the overlap will be the distance between marks. **NOTE:** if driveline is the correct length disregard cutting procedures.

## ***PREPARATION FOR USE – continued***

- Clamp end of driveline in vice. Cut off shield where marked. Using the cut off section of shield as a guide, cut shaft the same amount. NOTE: when finished cutting, the shield will be shorter than the shaft. Deburr driveline sections and clean away all chips and filings.
- Repeat cut procedure to other driveline section.
- Apply multi-purpose grease to outside of male driveline section. Assemble driveline and install onto tractor and mower. Pull on each driveline section to ensure yokes lock into position. Make sure driveline shielding is in place and in good condition.
- Fasten the top arm of the tractor to the top link pin in the hitch weldment.
- Start the engine, and raise the mower slightly.
- Adjust the three point hitch arms to level, and center the mower behind the tractor.
- Adjust the turnbuckle on the top of the three point hitch to level the mower from front to back.
- Adjust the cutting height with the wheel yoke spacers at each wheel. The height should be the same all around.

## ***OPERATING INSTRUCTIONS***

### Check before each use

- Check for proper air pressure in tires.
- Check tightness of belts, bolts, and other hardware.
- Check blades to see if they are damaged. Sharpen or replace if needed.
- Check that blade bolts are tight.
- Clear the work area of anything that might be thrown, and check to ensure all bystanders are standing clear before starting.

### Field operation

- Start the tractor with the mower resting with all four wheels on the ground.
- With the tractor idling slowly engage the PTO and bring the speed up to 540 PTO rpm for cutting.
- The mower works best on dry grass. Slower operation speeds and occasional cleaning may be required on damp or wet grass.
- The PTO must run at a full 540 PTO rpm best performance. Slower drive speeds or double cutting could be required for very high grass.
- Sharpen blades when grass tears instead of cutting cleanly.
- Slow down when turning corners. Cornering too sharply may leave a small strip of grass uncut.

### Disconnecting from tractor

- Park on firm level area and clean the mower.
- Lower the mower until the tension is removed from hitch area.
- Disconnect the hitch arms and PTO shaft.
- Cover the mower or store indoors to prevent rust.

## ***MAINTENANCE***

### Check list before each use

- Check tractor tire pressure. Refer to tractor operators manual. Check mower tire pressure. Tire pressure should be 50 psi for the 5' & 6' mowers and 40 psi for the 7' mower. Inspect wheels for damage. Repair or replace if necessary.
- Inspect spindles and blades to be sure no foreign objects such as wire or rope is wrapped around them.
- Check blade bolts for tightness blades should be tightened to 230 foot pounds.
- Inspect blades for wear. If blades need to be sharpened or replaced do so before operating mower. DO NOT sharpen blades while still on the mower. All three blades must be sharpened or replaced at the same time to maintain proper balance on the mower.
- Before using the mower for the first time, grease all wheel bushings until you see grease coming out of the end of the wheel hub.
- After 8 hour of use.
  - Wheels – Apply multi-purpose grease.
  - Wheel yoke pivot - Apply multi-purpose grease.
- After 20 hours of use.
  - PTO driveline universal joints – Apply multi-purpose grease.
  - PTO driveline shield – Apply 2-3 shots of multi-purpose grease to plastic fitting.
- After 40 hours of use.
  - The gearbox should be filled with SAE 90 oil to the bottom of level plug when shipped. Check the mower before using, and at regular intervals. See that this oil level is maintained.

### Belt tensioning or replacement

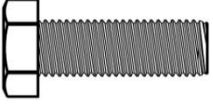



Remove belt guards to check belt tightness. The center of the belt span should deflect about  $\frac{1}{2}$ " with normal pressure. To tighten the belts the gearbox mounting plate will need to be loosened. Use the threaded rod and nuts to tighten the belt. Lock the rod in place and retighten the gearbox mounting plate. To change the belts follow the same procedure, you will need to loosen the belts further to remove them. NOTE: belts should always be replaced in matching sets.

## MAINTENANCE – continued

### BOLT TORQUE

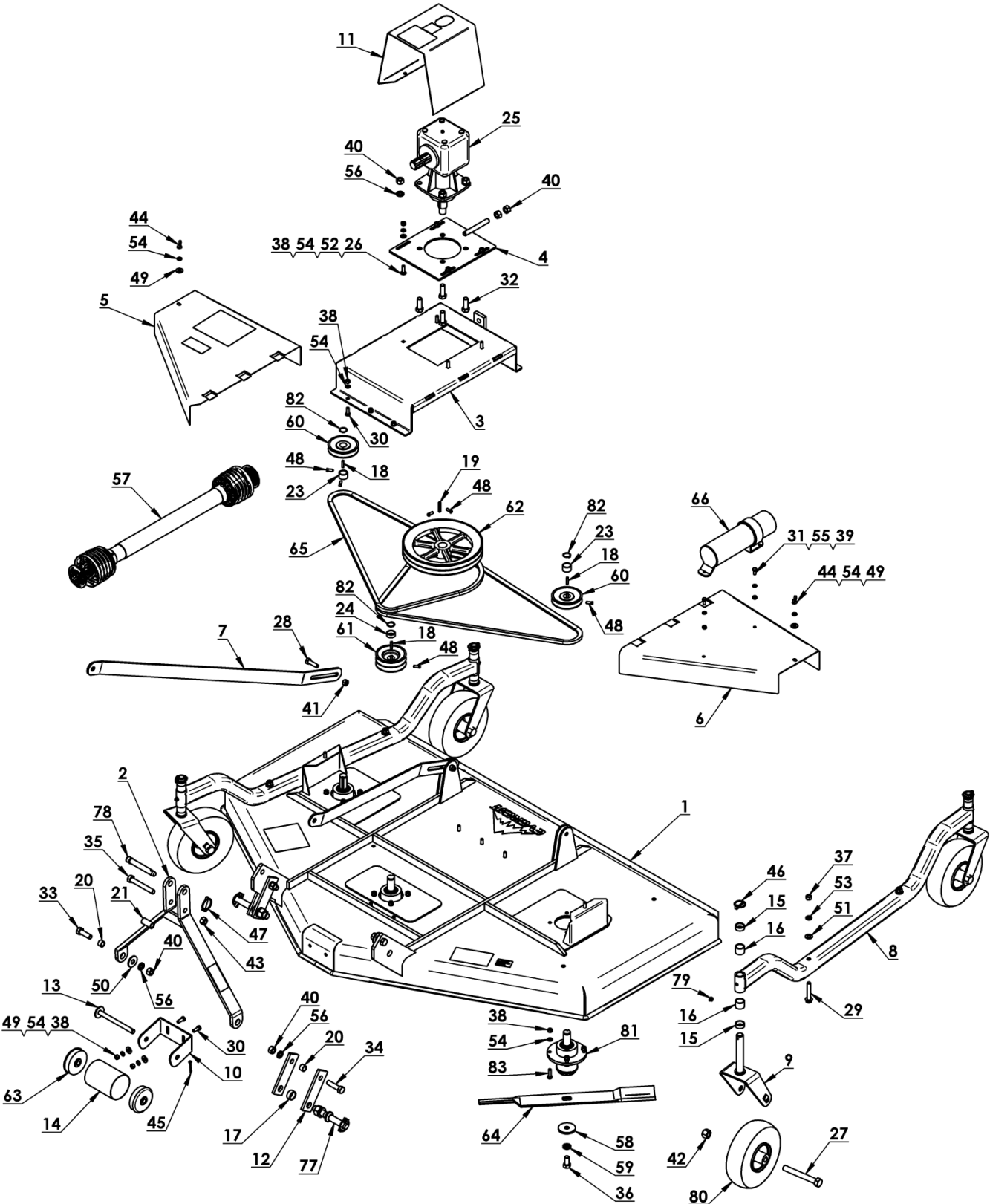
The following ft-lbs torque values are advisory only. Extreme caution should be used when using torque/tension relationships. Torque is only an indirect indication of tension. Under/over tightening of fasteners can result in costly equipment failure and/or personal injury.

No two bolts respond exactly the same to a given torque. There are numerous "real world" complications. Things such as dirt in a tapped hole, grease or oil on the threads, damaged threads, hole misalignment, accuracy of torque measuring device, and numerous other factors can alter the torque-tension relationship. Even perfect input torque can give a variation of preload by as much as 25%.

										
Bolt Diameter	Thread Series	SAE2			SAE5			SAE8		
		Oiled	As Received	Dry	Oiled	As Received	Dry	Oiled	As Received	Dry
1/4"	UNC	2.7	3	3.6	6.3	7.2	8.5	8.9	10.1	11.9
	UNF	3.1	3.5	4.1	7.2	8.2	9.7	10.2	11.6	13.6
5/16"	UNC	5.5	6.3	7.4	13.1	14.8	17.4	18.4	20.9	24.6
	UNF	6.1	6.9	8.2	14.5	16.4	19.3	20.4	23.1	27.2
3/8"	UNC	10	11	13	23	26	31	33	37	44
	UNF	11	13	15	26	30	35	37	42	49
7/16"	UNC	16	18	21	37	42	49	52	59	70
	UNF	18	20	23	41	47	55	58	66	78
1/2"	UNC	24	27	32	57	64	75	80	91	106
	UNF	27	31	36	64	72	85	90	102	120
9/16"	UNC	35	39	46	82	92	109	115	131	154
	UNF	39	44	51	91	103	121	128	146	171
5/8"	UNC	48	54	64	113	128	150	159	180	212
	UNF	54	61	72	128	145	170	180	204	240
3/4"	UNC	85	96	113	200	227	267	282	320	376
	UNF	94	107	126	223	253	297	315	357	420
7/8"	UNC	136	155	182	322	365	429	455	515	606
	UNF	150	171	201	355	403	474	502	568	669
1"	UNC	204	232	273	483	547	644	682	772	909
	UNF	229	260	306	542	614	722	766	867	1020

**All Values are in foot-pounds. To convert foot-pounds to inch-pounds, multiply by 12.**

PARTS LIST ILLUSTRATION





**PARTS LIST**

ITEM	PART NO.	DESCRIPTION
1	103757	5' MOWER DECK
	103785	6' MOWER DECK
	103799	7' MOWER DECK
2	103739	HITCH ASSEMBLY
3	115038	GEARBOX MOUNT ASSEMBLY
4	103774	GEARBOX BASE PLATE
5	103743	PULLEY GUARD 5' RH
	103752	PULLEY GUARD 6' RH
	103755	PULLEY GUARD 7' RH
6	103762	PULLEY GUARD 5' LH
	103753	PULLEY GUARD 6' LH
	103754	PULLEY GUARD 7' LH
7	103731	PIVOT BAR 5' MOWER
	103740	PIVOT BAR 6' MOWER
	103741	PIVOT BAR 7' MOWER
8	104005	AXLE BEAM 5'
	104006	AXLE BEAM 6'
	104007	AXLE BEAM 7'
9	104011	WHEEL YOKE 5' & 6'
	104022	WHEEL YOKE 7'
10	103746	ROLLER HOLDER
11	115002	PTO GUARD
12	105789	LIFT BRACKET
13	104039	ROLLER PIN
14	104408	FINISHING MOWER ROLLER
15	104013	WHEEL YOKE SPACER 1/2"
16	104014	WHEEL YOKE SPACER 1"
17	104030	LIFT PIN BUSHING
18	104418	SINGLE PULLEY KEYWAY
19	104419	DOUBLE PULLEY KEYWAY
20	105549	HITCH BUSHING
21	105556	PIVOT BAR SPACER (5' & 6')
	105560	PIVOT BAR SPACER (7')
22	105822	OPERATOR AND PARTS MANUAL
23	104415	SPINDLE PULLEY SPACER, 9/16" (5')
	115036	SPINDLE PULLEY SPACER, 25/32" (6' & 7')
24	115037	SPINDLE PULLEY SPACER, 15/32"
25	115116	GEARBOX
26	10000670	BOLT, CARRAGE, 3/8 X 1 1/4
27	10000681	BOLT, HEX, 3/4 X 6 (5' & 6')
	10000682	BOLT, HEX, 3/4 X 7 (7')
28	10000716	BOLT, HEX, 1/2 X 1-3/4
29	10000719	BOLT, HEX, 1/2 X 3

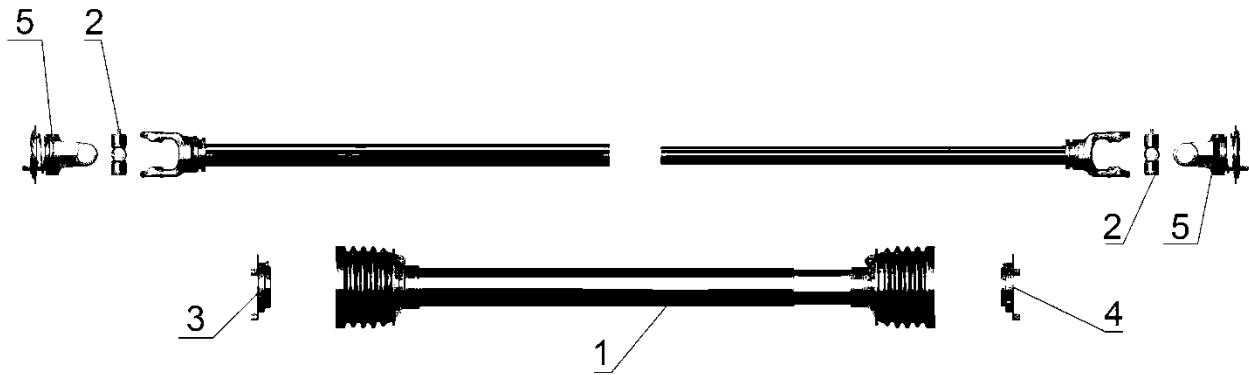
**PARTS LIST continued**

30	10000757	BOLT, HEX, 3/8 X 1
31	10000770	BOLT, HEX, 5/16 X 3/4
32	10000773	BOLT, HEX, 5/8 X 1-3/4
33	10000774	BOLT, HEX, 5/8 X 2
34	10000775	BOLT, HEX, 5/8 X 2-1/2
35	10000780	BOLT, HEX, 5/8 X 4-1/2
36	10000850	BOLT, HEX, 5/8 X 1-1/4
37	10001102	NUT, HEX, 1/2
38	10001113	NUT, HEX, 3/8
39	10001114	NUT, HEX, 5/16
40	10001115	NUT, HEX, 5/8
41	10001190	NUT, LOCK, 1/2
42	10001196	NUT, LOCK, 3/4
43	10001201	NUT, LOCK, 5/8
44	10001235	NUT, WING, 3/8
45	10001241	PIN, COTTER, 3/16 X 1 1/2
46	10001266	PIN, LYNCH, 3/16
47	10001268	PIN, LYNCH, 7/16
48	10001342	SET SCREW, 5/16 X 3/4
49	10001390	WASHER, FLAT, 3/8
50	10001391	WASHER, FLAT, 5/8
51	10001420	WASHER, FLAT, SAE, 1/2
52	10001422	WASHER, FLAT, SAE, 3/8
53	10001431	WASHER, LOCK, 1/2
54	10001436	WASHER, LOCK, 3/8
55	10001437	WASHER, LOCK, 5/16
56	10001438	WASHER, LOCK, 5/8
57	10002319	PTO 5' & 6' MOWER
	10002321	PTO 5' & 6' HEAVY DUTY
	10002320	PTO 7' MOWER
58	10005594	WASHER, 21/32 X 2-1/2 X 1/4
59	10005595	WASHER, LOCK, STEEL, GR.8, 5/8
60	10005599	SHEAVE, SINGLE, BK47-1" BORE (5' & 6' MOWER)
	10005611	SHEAVE, SINGLE, BK55-1" BORE (7' MOWER)
61	10005600	SHEAVE, DOUBLE, 2BK47-1" BORE (5' & 6' MOWER)
	10005610	SHEAVE, DOUBLE, 2BK55-1" BORE (7' MOWER)
62	10005601	SHEAVE, DOUBLE, 2BK120-1-1/4" BORE
63	10005603	CAP, END, ROLLER, 4"
64	10005604	BLADE, STD, F/M 5'
	10005605	BLADE, HARDENED, F/M 5'
	10005606	BLADE, STD, F/M 6'
	10005607	BLADE, HARDENED, F/M 6'
	10005609	BLADE, HARDENED, F/M 7'

**PARTS LIST continued**

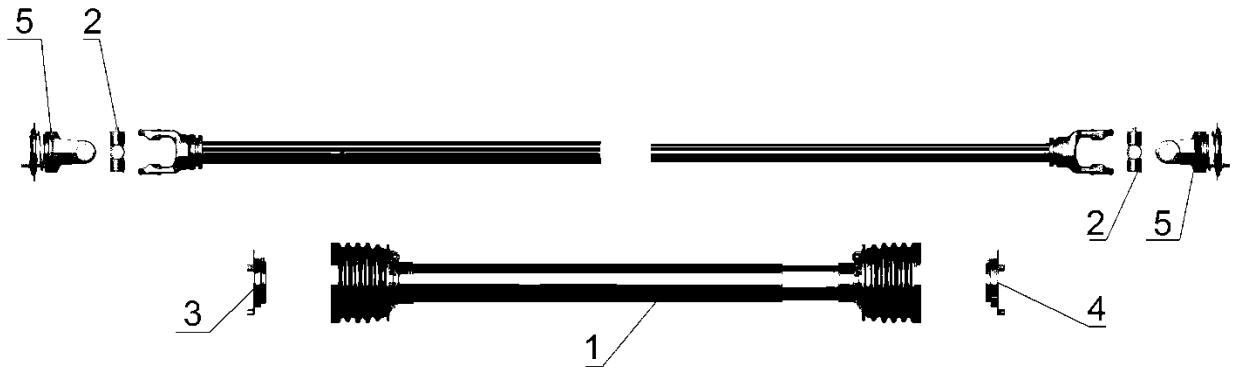
65	10005602	V-BELT B70 (MATCHED SET OF 2) (5' MOWER)
	10005608	V-BELT B78 (MATCHED SET OF 2) (6' MOWER)
	10005612	V-BELT B87 (MATCHED SET OF 2) (7' MOWER)
66	10005613	HOLDER, MANUAL 3-1/2" DIA.
67	10005614	DECAL, EVEREST-IVORY
68	10005615	DECAL, SERIAL NUMBER
69	10005616	DECAL, WARNING, MUST NOT OPERATE
70	10005617	DECAL, WARNING, CHECK PTO SHAFT LENGTH
71	10005618	DECAL, DANGER, KEEP AWAY
72	10005619	DECAL, CAUTION, READ OPERATION MANUAL
73	10005620	DECAL, CAUTION, DO NOT PERMIT RIDERS
74	10005621	DECAL, WARNING, INSURE SAFETY SHIELDS
75	10005622	DECAL, CHECK OIL
76	10005636	CARTON, CARDBOARD 11" X 11" X 19"
	10005637	CARTON, CARDBOARD 13" X 13" X 21"
77	10005638	PIN, LIFT CAT. 1 (DIA. 7/8") W/2-1/4" USABLE LENGTH
78	10005640	PIN, TOP LINK CAT. 1 (DIA. 3/4") W/3/7/8" USABLE LENGTH
79	10001612	GREASE ZERK, STRAIGHT, 1/8 NPT
80	10005643	WHEEL & TIRE, 4-4.10x4 (5' & 6' MOWER)
	10005641	WHEEL & TIRE, 4-13x5-6 (7' MOWER)
81	10005646	SPINDLE HEAVY DUTY
82	10005670	RING, RETAINER, EXT. 1"
83	10008031	BOLT, HEX, 3/8 X 1-1/4

## 5' & 6' PTO PARTS



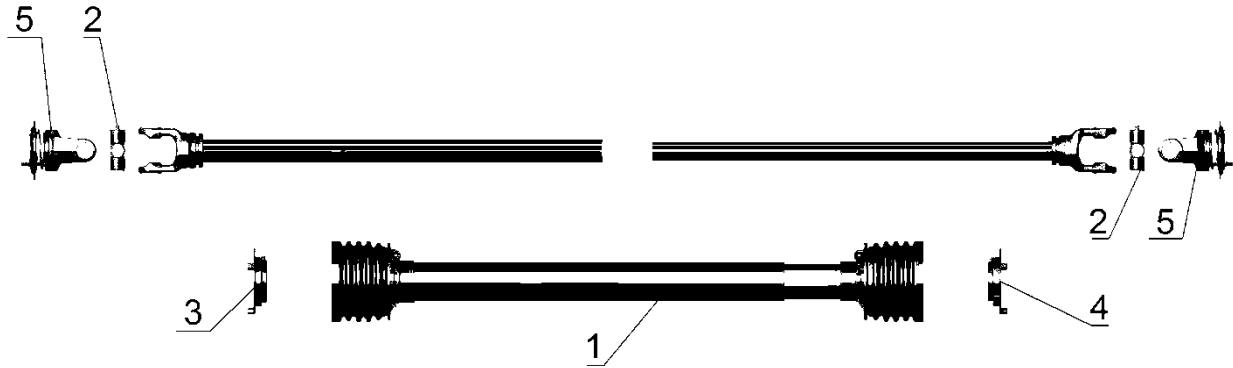
ITEM	PART NO.	DESCRIPTION
1	10008707	COMPLETE SHIELD KIT
2	10011341	CROSS KIT
3	10011425	INNER SHIELD SUPPORT
4	10011424	OUTER SHIELD SUPPORT
5	10008712	Q.D. YOKE #1 6-SPLINE 540-RPM

## 5' & 6' PTO PARTS OPTIONAL HEAVY



ITEM	PART NO.	DESCRIPTION
1	10011426	COMPLETE SHIELD KIT
2	10011346	CROSS KIT
3	10011349	INNER SHIELD SUPPORT
4	10011427	OUTER SHIELD SUPPORT
5	10008713	Q.D. YOKE #1 6-SPLINE 540-RPM

## 7' PTO PARTS



ITEM	PART NO.	DESCRIPTION
1	10011428	COMPLETE SHIELD KIT
2	10011346	CROSS KIT
3	10011349	INNER SHIELD SUPPORT
4	10011427	OUTER SHIELD SUPPORT
5	10008713	Q.D. YOKE #1 6-SPLINE 540-RPM

**WHOLEGOODS PRODUCT KIT NUMBERS****FINISHING MOWER**

<b>5500</b>	
E00001	5' FINISHING MOWER MAIN BODY ASSEMBLY
E00002	TIRES AND CARTON ASSEMBLY
<b>5600</b>	
E00004	6' FINISHING MOWER MAIN BODY ASSEMBLY
E00002	TIRES AND CARTON ASSEMBLY
<b>5700</b>	
E00005	7' FINISHING MOWER MAIN BODY ASSEMBLY
E00006	TIRES AND CARTON ASSEMBLY
<b>OPTIONS</b>	
E00008	5' & 6' OPTIONAL HEAVY DUTY PTO
E00009	OPTIONAL SOLID RUBBER TIRES FOR 5' & 6' MOWERS
E00010	OPTIONAL SOLID RUBBER TIRES FOR 7' MOWER
E00011	QUICK HITCH KIT

MANUFACTURED BY:



**General Metal Fabrication Ltd**

**269 Manitoba Rd**

**Winkler MB R6W 4A9**

**Canada**

Phone 1-204-325-9374

TF 1-866-325-9374

Fax 1-204-325-5175

[www.generalmetal.ca](http://www.generalmetal.ca)